

JOEGREEN ROADMAP TO ENERGY EFFICIENCY™



JOEGREEN Audit Team: Chris Henson

Audit Date: May 26th, 2010

Town of Topsfield,

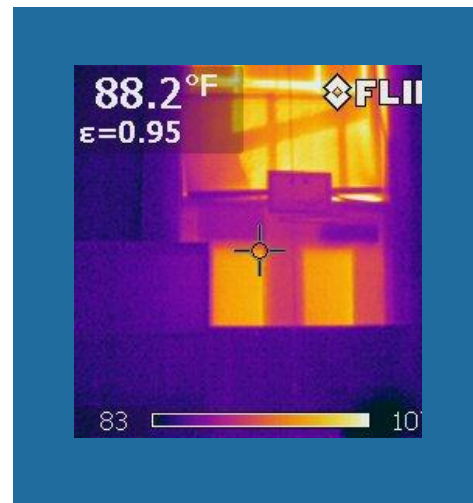
Thank you, once again, for choosing us to be your partner in Energy Efficiency. The Joe Green Commercial Energy Audit was the first step towards meeting your Energy Efficiency goals. It allowed us to learn about your building and how it is used. We have used the data from our audit to create your “Roadmap to Energy Efficiency”, with customized solutions tailored specifically to your situation/needs and with the ultimate aim of enabling you to meet your goals.

GOODNEWS:

We were able to diagnose the problem areas in the facility during the Audit. We have listed the specific problems responsible for your energy efficiency issues. Implementing the customized solutions will save you **21- 36% per year on your HEATING bills (\$1,214-\$2,108/yr) AND 37- 57% per year on your ELECTRICITY bills (\$3,575 -\$5,507/yr).**

YOURGOALS:

- **INCREASE ENERGY EFFICIENCY**
- SAVE MONEY ON ENERGY BILLS
- INCREASE BUILDING HEALTH AND SAFETY
- **INCREASE BUILDING COMFORT**



YOUR PROBLEMS:

Based on the Joe Green Energy Audit conducted on May 26th, 2010:

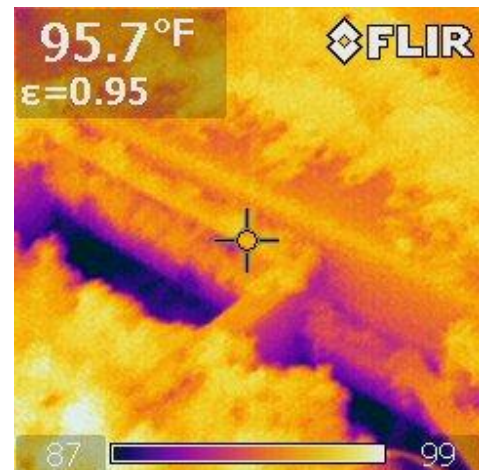


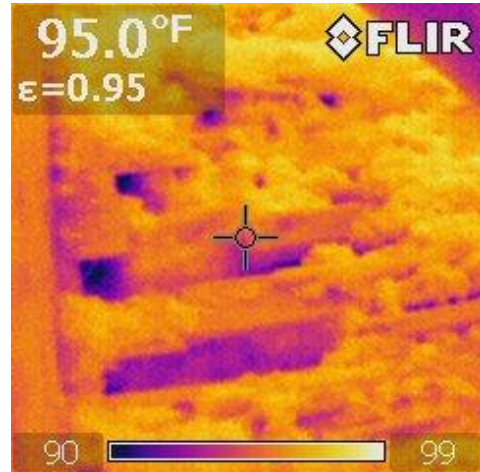
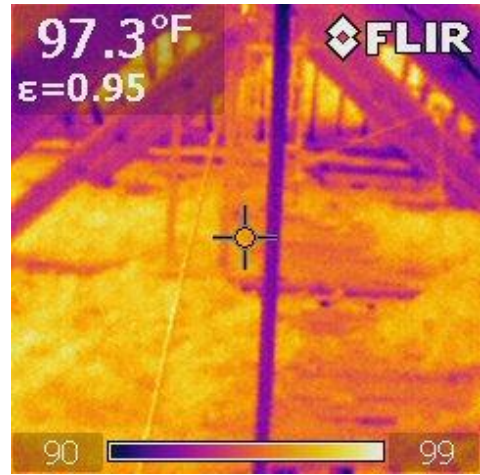
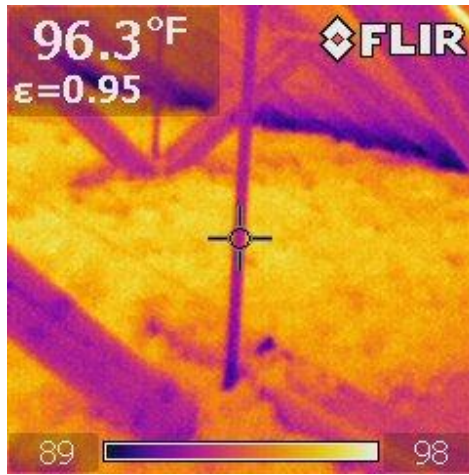
- **Ventilation , Heat Loss, And Infiltration**
 - Lack Of Insulation In Walls
 - Attic Edge Unsealed
 - Soffits Along The Attic Edge Lack Ventilation
 - Attic Lacks Sufficient Insulation
 - Basement Rim Joist Unsealed
 - Air Chutes Unsealed
 - Air Leakage/ Infiltration Through Single Pane Window Units
 - Air Lock Needed Between Inside And Outside Doors
- **Furnace And Distribution**
 - Inefficient Furnace And AC System
 - Ineffective Fan System In Converted Auditorium
- **Electricity Usage**
 - Inefficient T-12 Lighting System
 - Inefficient DHW System
 - Knob and Tube Wiring in Attic

INFRARED PICTURES

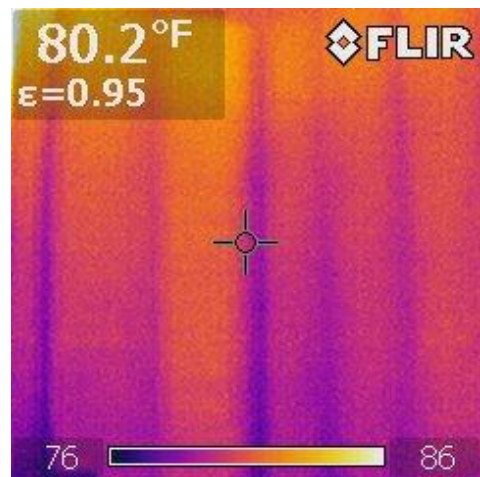
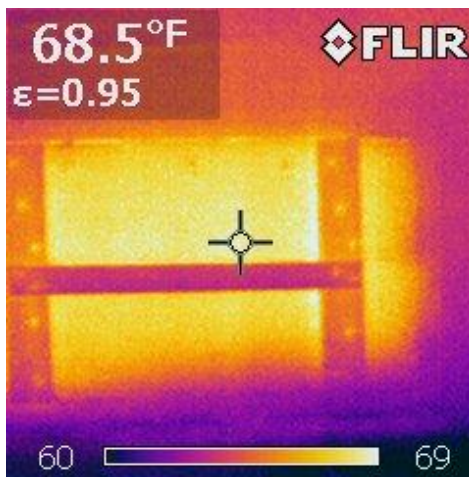
*Note that darker colors = cooler areas

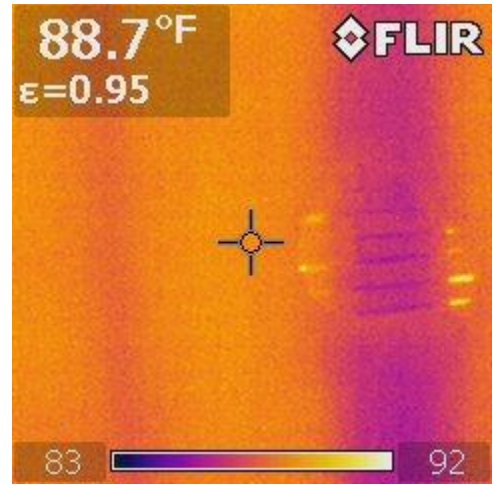
Attic Floor



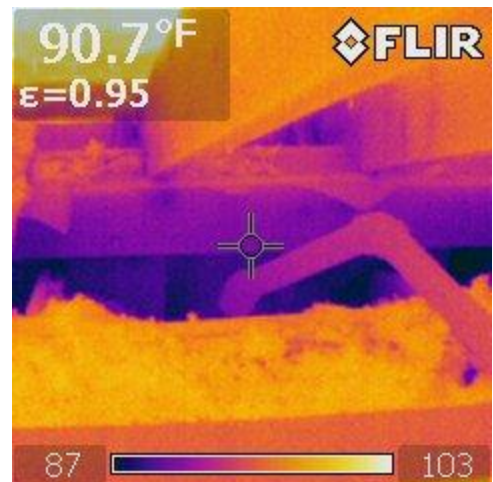
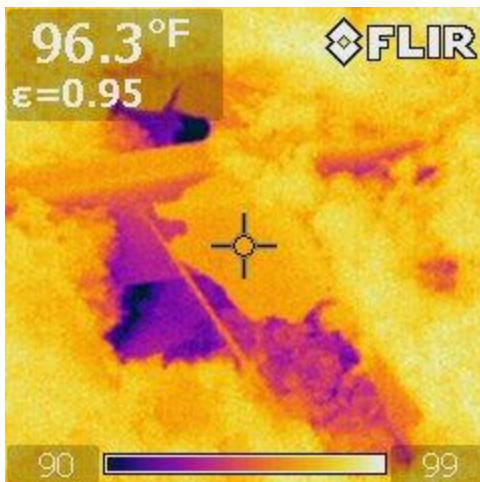
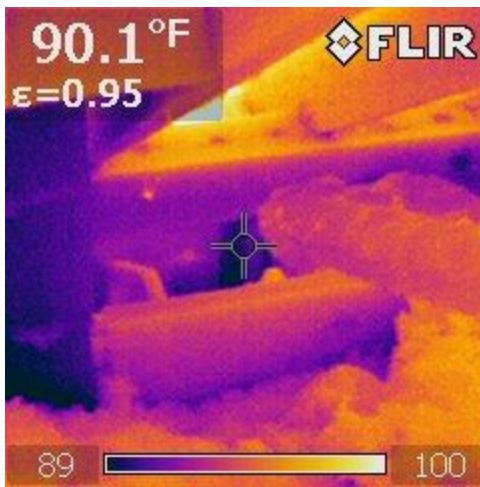


Attic Walls





Attic Edge

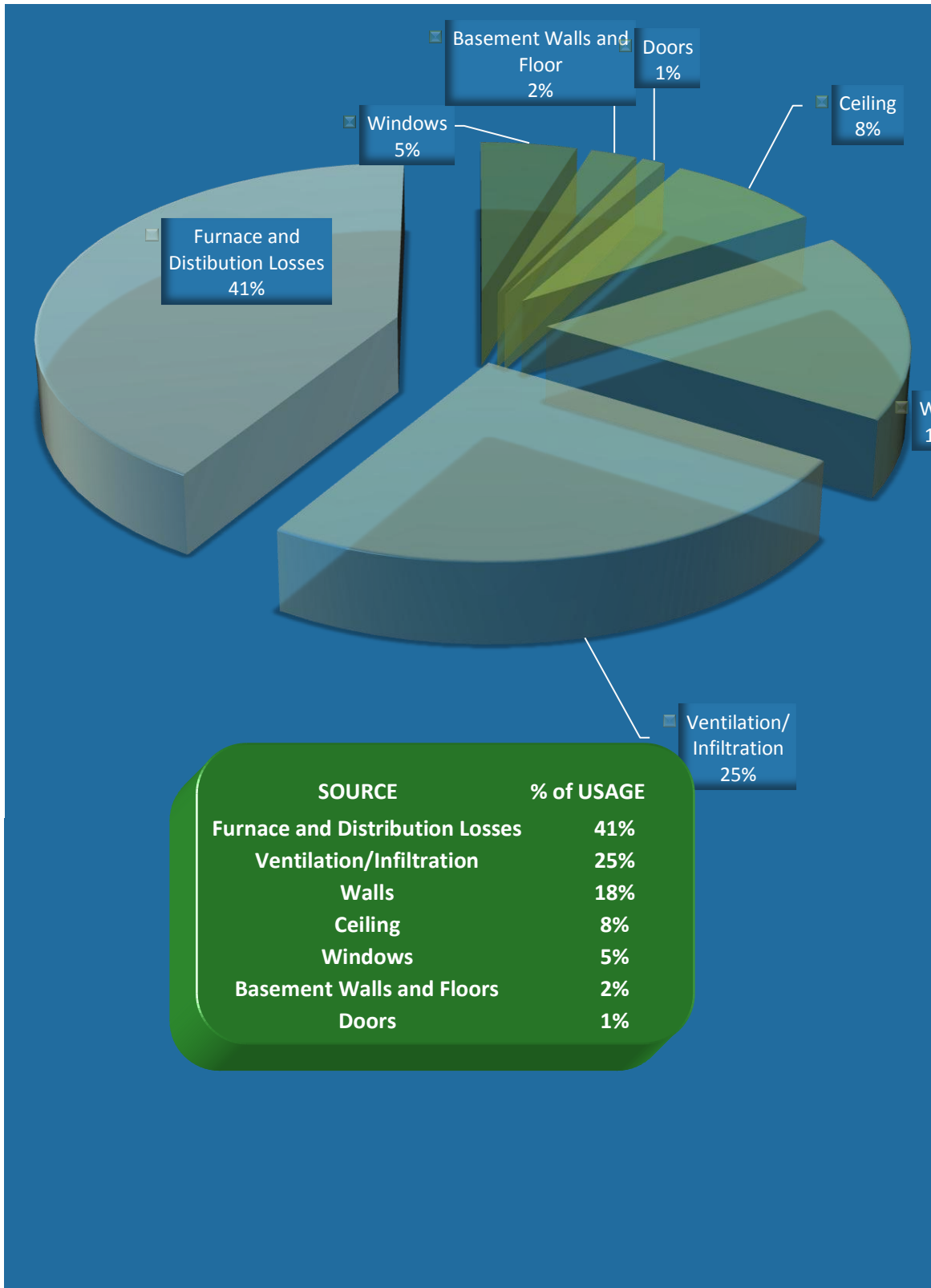


Air Chutes



Additional Pictures can be found at <http://photobucket.com/joegreenhome-TopsfieldTownHall> Password: JOEGREEN

ENERGY USAGE



YOURSOLUTIONS:

	<i>Initial Investment</i>	<i>Per Year Savings</i>	<i>% of Energy Savings</i>
Add Attic Insulation	\$4,819	\$581-\$870	10-15%
Add Blown-In Insulation To The Walls	\$16,954	\$1,161-\$1,742	20-30%
Seal And Insulate The Attic Edge	\$2,021	\$290-\$406	5-7%
Seal And Insulate Basement Rim Joist	\$1,611.95	\$406-\$697	7-12%
Replace Furnace And AC System	-	-	-
Replace T-12 Lighting With T-8	\$8,268	\$2,416-\$3,382	25-35%
Seal Air Chutes Running Through Building	\$545.90	\$406-\$697	7-12%
Install Interior Storm Windows	-	\$581-\$1161	10-20%
Replace Hot Water System With An On- Demand System	\$3543.34	\$193-\$483	2-5%
Install Auto-Shut Off Motion Sensor Devices On Lights In Each Office	\$1,181	\$483-\$966	5-10%
Replace All Incandescent Bulbs With CFLs	\$504.95	-	-
Install A Fan System In Converted Auditorium	-	\$116-\$406	2-7%
Install Solar Panels On The South Side Of The Roof	-	-	-
Create A Vestibule Area Outside Of Doors	-	\$406-\$871	7-15%
Remove Knob And Tube Wiring In Attic	-	-	-

Source: Based on data gathered from audit and initial estimates contingent upon site inspection by a professional plumber, HVAC, etc.